



Leader in **spine** technology innovation

[www.greensurgical.com](http://www.greensurgical.com)





## OUR VISION

Leading the best industrial practices in our manufacturing facility, GREENS® believe in providing Best products to the consumer; giving them optimum satisfaction of their life at very affordable price with Guaranteed Quality. Innovation and improvement stays at the core of our organizational values.

## OUR EXPERIENCE

Since 1997, Greens Surgicals Pvt. Ltd. is engaged in manufacturing, exporting and supplying of orthopaedic and maxillofacial implants. We assure delivery of quality products 316 LVM (ASTM F-138/ISO-5832-1), Titanium (ASTM-136) under our brand name GREENS®.

## WHY CHOOSE US

Greens Surgicals Pvt. Ltd. is known for its competence in Designing Implants and Instruments which meet the current needs of Surgeons. We have Biotechnical Engineers on Board Panel who provide support in designing implants with latest technical requirements including clinical evaluation.

## OUR MISSION

Achieving global identity of our products in terms of Quality, Price and Customer Satisfaction. We are abide to meet the challenges through continuous improvement in Quality, Occupational Health, Safety and Environmental issues.

## WHAT WE DO

Greens Surgicals Pvt. Ltd. is one of the leading manufacturers of orthopaedic implants and instruments having US-FDA 510(k), CE(DNV), ISO 13485:2016, ISO 13485:2003, ISO 9001:2008, EAR, FDA(INDIA), GMP(INDIA), and FSC(INDIA). Our infrastructure is well equipped with latest CNC-VMC machines.



**Greens (G3) Polyaxial Single Thread Screw**

(For 5.5mm Rod)

Material	Diameter (mm)	Length (mm)	Cat.No.
Titanium	Ø 4.5	25	643.402
		30	643.403
		35	643.404
		40	643.405
		45	643.406
Titanium	Ø 5.5	30	643.411
		35	643.412
		40	643.413
		45	643.414
		50	643.415
Titanium	Ø 6.5	30	643.421
		35	643.422
		40	643.423
		45	643.424
		50	643.425
Titanium	Ø 7.5	55	643.426
		35	643.451
		40	643.452
		45	643.453
		50	643.454

INNI SCREW DESIGN  
- INDENTS INTO ROD TO  
PREVENT ROD MIGRATION

ESPECIALLY DESIGNED  
THREADING  
- PREVENTS INNI SCREW  
- ENDURES STRONG  
TIGHTENNING FACES

IMPLANT GRADE TITANIUM  
6AL-4V-ELI  
- BIOCOMPATIBLE  
- MRI-FRIENDLY  
- NON-CORROSIVE  
- STRONG/ DURABLE

SCREW THREAD:-  
- CANCELLOUS THREAD  
- TAPPER SHANK  
- SELF TAPPING THREAD  
RESULTS INTO  
- REDUCES THE  
POTENTIAL FOP PEDICLE  
DAMAGE  
- OPTIMIZE BONE GRIP  
AND SHANK STRENGTH  
- REDUCES SCREW PULL  
OUT POTENTIAL

DUAL START THREAD





**Greens (G3) Monoaxial Single Thread Screw**

(For 5.5mm Rod)

Material	Diameter (mm)	Length (mm)	Cat.No.
Titanium	Ø 4.5	25	643.470
		30	643.471
		35	643.472
		40	643.473
		45	643.474
Titanium	Ø 5.5	30	643.477
		35	643.478
		40	643.479
		45	643.480
		50	643.481
Titanium	Ø 6.5	30	643.490
		35	643.491
		40	643.492
		45	643.493
		50	643.494
Titanium	Ø 7.5	35	643.501
		40	643.502
		45	643.503
		50	643.504

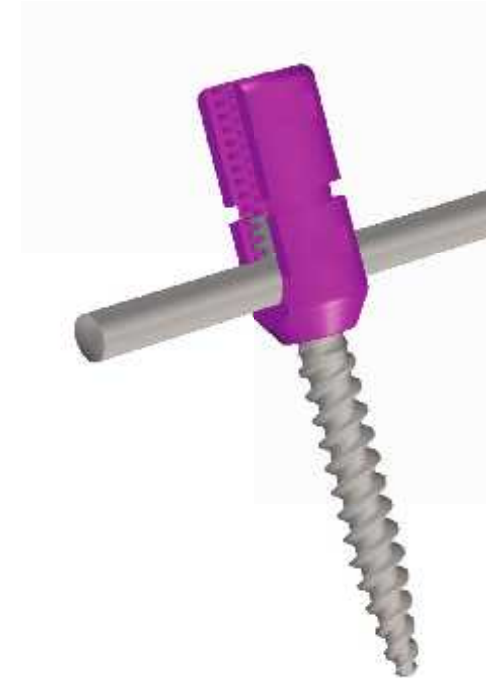




**Greens (G3) Single Thread Polyaxial Reduction Screw**

(For Ø 5.5mm)

Material	Diameter (mm)	Length (mm)	Cat.No.
Titanium	Ø 5.5	30	643.551
		35	643.552
		40	643.553
		45	643.554
		50	643.555
Titanium	Ø 6.5	30	643.565
		35	643.566
		40	643.567
		45	643.568
		50	643.569





**Greens (G2) Polyaxial CorticoCancellous Reduction Screw**

(For 5.5mm Rod)

Material	Diameter (mm)	Length (mm)	Cat.No.
Titanium	Ø 5.5	30	645.730
		35	645.735
		40	645.740
		45	645.745
		50	645.750
Titanium	Ø 6.5	30	645.785
		35	645.790
		40	645.795
		45	645.800
		50	645.805



### Greens (G2) Polyaxial CorticoCancellous Screw

(For 5.5mm Rod)

Material	Diameter (mm)	Length (mm)	Cat.No.
Titanium	Ø 4.5	20	644.404
		25	644.405
		30	644.406
		35	644.407
		40	644.408
Titanium	Ø 5.5	45	644.409
		30	644.421
		35	644.422
		40	644.423
		45	644.424
Titanium	Ø 6.5	50	644.425
		30	644.441
		35	644.442
		40	644.443
		45	644.444
Titanium	Ø 7.5	50	644.445
		35	644.462
		40	644.463
		45	644.464
		50	644.465

TOP LOADING SCREW HEAD  
 - BETTER ACCESSIBILITY  
 - EASY ROD INSERTION

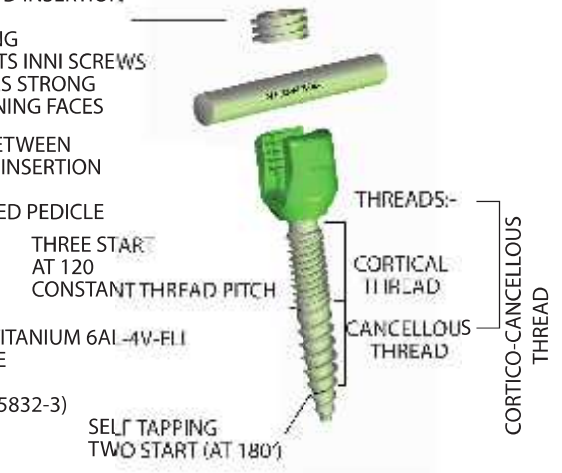
THREADING  
 - PREVENTS INNI SCREWS  
 - ENDURES STRONG TIGHTENING FACES

- ALLOWS FOR A SMOOTH TRANSITION BETWEEN TWO AND THREE START THREAD DURING INSERTION

- CORTICAL THREAD PROVIDES INHANCED PEDICLE FIXATION IN DIMMISHED FREE QUALITY

IMPLANT GRADE TITANIUM 6AL-4V-FLI  
 - BIOCOMPATIBLE  
 - MRI- FRIENDLY  
 - ASTM F136 (ISO 5832-3)

SELF TAPPING TWO START (AT 180°)





**Greens (G2) Monoaxial CorticoCancellous Screw**

(For 5.5mm Rod)

Material	Diameter (mm)	Length (mm)	Cat.No.
Titanium	Ø 4.5	20	644.520
		25	644.525
		30	644.526
		35	644.527
		40	644.528
		45	644.529
Titanium	Ø 5.5	30	644.540
		35	644.541
		40	644.542
		45	644.543
		50	644.544
Titanium	Ø 6.5	30	644.565
		35	644.566
		40	644.567
		45	644.568
		50	644.569
Titanium	Ø 7.5	35	644.582
		40	644.583
		45	644.584
		50	644.585





**Greens (G1) Monoaxial Screw**

(For 6.0 mm Rod)

Material	Diameter (mm)	Length (mm)	Cat.No.
Titanium	Ø 4.5	25	643.025
		30	643.030
		35	643.035
		40	643.040
		45	643.045
Titanium	Ø 5.5	30	643.130
		35	643.135
		40	643.140
		45	643.145
		50	643.150
Titanium	Ø 6.5	30	643.230
		35	643.235
		40	643.240
		45	643.245
		50	643.250
Titanium	Ø 7.5	30	643.730
		35	643.735
		40	643.740
		45	643.745
		50	643.750



### Greens (G1) Polyaxial Screw

(For 6.0 mm Rod)

Material	Diameter (mm)	Length (mm)	Cat.No.
Titanium	Ø 4.5	25	644.025
		30	644.030
		35	644.035
		40	644.040
		45	644.045
Titanium	Ø 5.5	30	644.130
		35	644.135
		40	644.140
		45	644.145
		50	644.150
Titanium	Ø 6.5	30	644.230
		35	644.235
		40	644.240
		45	644.245
		50	644.250
Titanium	Ø 7.5	35	644.335
		40	644.340
		45	644.345
		50	644.350





**Greens (G1) Polyaxial Reduction Screw**  
(For 6.0 mm Rod)

Material	Diameter (mm)	Length (mm)	Cat.No.
Titanium	Ø 5.5	35	645.535
		40	645.540
		45	645.545
		50	645.550
Titanium	Ø 6.5	30	645.630
		35	645.635
		40	645.640
		45	645.645
		50	645.650







**Greens (G3) Polyaxial Single Thread Screw -HA Coated**

(For 5.5 mm Rod)

Material	Diameter (mm)	Length (mm)	Cat.No.
Titanium	Ø 5.5	30	640.630H
		35	640.631H
		40	640.632H
		45	640.633H
		50	640.634H
Titanium	Ø 6.5	30	640.650H
		35	640.651H
		40	640.652H
		45	640.653H
		50	640.654H
		55	640.655H





Pre Stress Polyaxial Transvers Rod Connector

(5.5/ 6.0 mm Rod)

Material	Diameter (mm)	Size	Cat.No.
Titanium	Ø 5.5/ 6.00	Extra Small	648.100
		Small	648.101
		Medium	648.102
		Large	648.103
		Extra Large	648.103.1



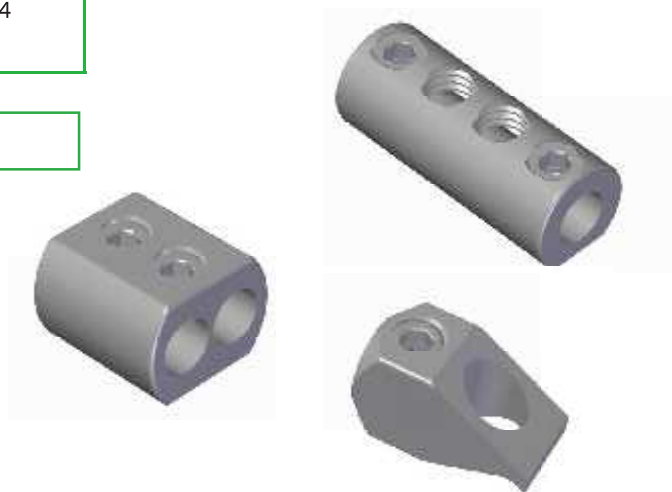
### Spine Rod Connector - Pair

Material	Diameter (mm)	Description	Cat.No.
Titanium	5.5 ROD	Monoaxial Transevers Spine Rod Connector - Pair	648.122
Titanium	6.0 ROD	Monoaxial Transevers Spine Rod Connector - Pair	648.104



### Spine Rod Connector

Material	Description	Cat.No.
Titanium	Rod To Rod Clamp - Axial (End To End Rod Clamp)	665.001
Titanium	Rod To Rod Clamp - Parallel (Offset Rod Connector)	665.002



### Scalal Block (To Connect 6.0 mm Rod)

Material	Diameter (mm)	Description	Cat.No.
Titanium	6.0 ROD	Scalal Block (To Connect 6.0Mm Rod And Polyxial Screw 6.5)	668.002





Dorso Iliac Connector

(For 5.5 mm Rod)

Material	Size (mm)	Cat.No.
Titanium	20	648.130
	25	648.132
	30	648.134

Dorso Iliac Connector

(For 6.0 mm Rod)

Material	Length (mm)	Cat.No.
Titanium	20	648.140
	25	648.142
	30	648.144





**(G3) Iliac Crest Poly Screw**

(For 5.5 mm Rod)

Material	Diameter (mm)	Length (mm)	Cat.No.
Titanium	Ø 5.5/ Ø 6.5	55	643.426
		60	643.427
		65	643.428
		70	643.429
		75	643.430
		80	643.431
		85	643.432
		90	643.433
		95	643.434
		100	643.435
		105	643.436
		110	643.437
		115	643.438
120	643.439		





(G1) Iliac Crest Poly Screw

(For 6.0 mm Rod)

Material	Diameter (mm)	Length (mm)	Cat.No.
Titanium	Ø 5.5/ 6.5	55	644.255
		60	644.260
		65	644.265
		70	644.270
		75	644.275
		80	644.280
		85	644.285
		90	644.290
		95	644.295
		100	644.300
		105	644.305
		110	644.310
		115	644.315
120	644.320		



Spinal Rod- Ø 5.5 mm

Material	Diameter (mm)	Length (mm)	Cat.No.
Titanium	Ø 5.5	60	665.460
		70	665.470
		80	665.480
		90	665.490
		100	665.500
		120	665.520
		140	665.540
		200	665.600
		300	665.700
		350	665.725
		500	665.800

Spinal Rod Ø 6 mm

Material	Diameter (mm)	Length (mm)	Cat.No.
Titanium	Ø 6	50	642.050
		60	642.060
		70	642.070
		80	642.080
		90	642.090
		100	642.100
		110	642.110
		120	642.120
		130	642.130
		140	642.140
		150	642.150
		200	642.200
		300	642.300
		350	642.350



Spinal Rod Ø 3.0 mm (For Monoaxial Transvers Spine Connector)

Material	Diameter (mm)	Length (mm)	Cat.No.
Titanium	Ø 3.0	50	662.050
		55	662.055
		60	662.060
		70	662.070
		80	662.080
		90	662.090
		100	662.100
		110	662.110
		125	662.125







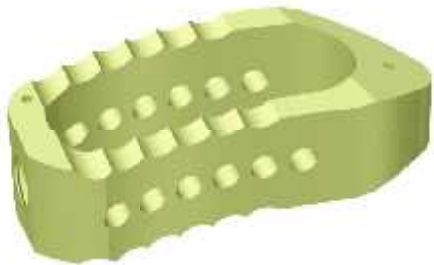
Tlif Cage 0° / 4° / 8° / 11° Taper

Material	Degree	Hight (mm)	Length (mm)	Cat. No.	
Titanium	0°	7	25	681.301	
		8		681.303	
		9		681.305	
		10		681.307	
		11		681.309	
		12		681.311	
	Titanium	0°	7	30	681.302
			8		681.304
			9		681.306
			10		681.308
			11		681.310
			12		681.312
Titanium	4°	7	25	681.401	
		8		681.403	
		9		681.405	
		10		681.407	
		11		681.409	
	Titanium	4°	7	30	681.402
			8		681.404
			9		681.406
			10		681.408
			11		681.410
Titanium	8°	7	25	681.411	
		8		681.413	
		9		681.415	
		10		681.417	
		11		681.419	
	Titanium	8°	7	30	681.412
			8		681.414
			9		681.416
			10		681.418
			11		681.420
Titanium	11°	7	25	681.421	
		8		681.423	
		9		681.425	
		10		681.427	
		11		681.429	
	Titanium	11°	7	30	681.422
			8		681.424
			9		681.426
			10		681.428
			11		681.430



Tlif Cage 0° / 4° / 8° / 11° Taper

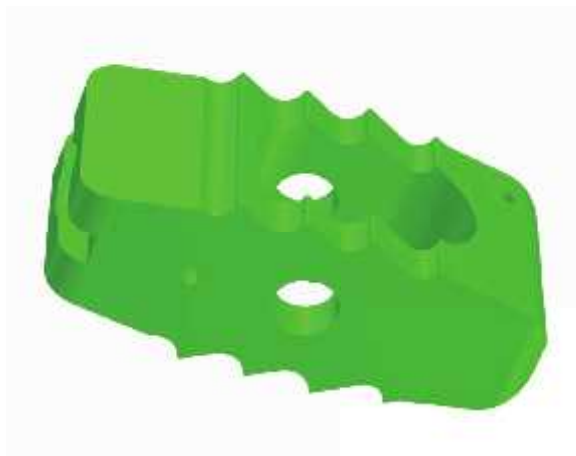
Material	Degree	Hight (mm)	Length (mm)	Cat. No.
Peek	0°	7	25	681.501
		8		681.503
		9		681.505
		10		681.507
		11		681.509
		12		681.511
	0°	7	30	681.502
		8		681.504
		9		681.506
		10		681.508
		11		681.510
		12		681.512
Peek	4°	7	25	681.521
		8		681.523
		9		681.525
		10		681.527
		11		681.529
	4°	7	30	681.522
		8		681.524
		9		681.526
		10		681.528
		11		681.530
		Peek		8°
8	681.543			
9	681.545			
10	681.547			
11	681.549			
8°	7		30	681.542
	8			681.544
	9			681.546
	10			681.548
	11			681.550
	Peek			11°
8		681.563		
9		681.565		
10		681.567		
11		681.569		
11°		7	30	681.562
		8		681.564
		9		681.566
		10		681.568
		11		681.570





Plif Cage

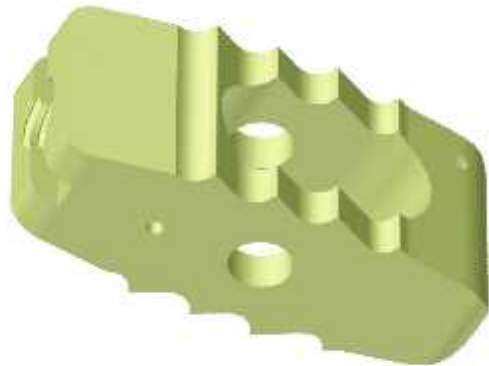
Material	Hight (mm)	Length (mm)	Cat.No.
Titanium	7	20	682.250
	8		682.251
	9		682.252
	10		682.253
	11		682.254
Titanium	7	22	681.260
	8		681.261
	9		681.262
	10		681.263
	11		681.264
Titanium	7	25	681.270
	8		681.271
	9		681.272
	10		681.273
	11		681.274





Plif Cage

Material	Height (mm)	Length (mm)	Cat. No.
Peek	7	20	1056.120
	8		1056.121
	9		1056.122
	10		1056.123
	11		1056.124
Peek	7	22	1056.140
	8		1056.141
	9		1056.142
	10		1056.143
	11		1056.144
Peek	7	25	1056.150
	8		1056.151
	9		1056.152
	10		1056.153
	11		1056.154





### Expandable Dorsal Spine Cages

Material	Diameter (mm)	Length (mm)	Cat.No.
Titanium	Ø 12	20-25	681.651
		25-32.5	681.652
		30-42.5	681.653
		40-60	681.654
Titanium	Ø 14	20-25	681.661
		25-32.5	681.662
		30-42.5	681.663
		40-60	681.664
Titanium	Ø 16	20-25	681.671
		25-32.5	681.672
		30-42.5	681.673
		40-60	681.674
Titanium	Ø 18	20-25	681.681
		25-32.5	681.682
		30-42.5	681.683
		40-60	681.684





Eco Cage



Material	Diameter (mm)	Length (mm)	Cat.No.
Titanium	Ø 10	10	681.102
		15	681.103
		20	681.104
		25	681.105
		30	681.106
		35	681.107
		40	681.108
		45	681.109
Titanium	Ø 12	10	681.112
		15	681.113
		20	681.114
		25	681.115
		30	681.116
		35	681.117
		40	681.118
		45	681.119
Titanium	Ø 14	10	681.122
		15	681.123
		20	681.124
		25	681.125
		30	681.126
		35	681.127
		40	681.128
		45	681.129
Titanium	Ø 16	10	681.132
		15	681.133
		20	681.134
		25	681.135
		30	681.136
		35	681.137
		40	681.138
		45	681.139
Titanium	Ø 18	10	681.142
		15	681.143
		20	681.144
		25	681.145
		30	681.146
		35	681.147
		40	681.148
		45	681.149
		50	681.150



(G1) Variable Angle Cervical Locking Plate  
15 Degree Taper Threading

Material	Holes	Length (mm)	Cat.No.
Titanium	4	19.0	690.219
	4	21.0	690.221
	4	23.0	690.223
	4	25.0	690.225
	4	27.5	690.227
	4	30.0	690.230
	6	32.5	690.232
	6	35.0	690.235
	6	37.5	690.237
	6	40.0	690.240
	6	42.5	690.242
	6	45.0	690.245
	6	47.5	690.247
	6	50.0	690.250
	8	55.0	690.255
	8	60.0	690.260
	10	65.0	690.265
	10	70.0	690.270





Lcp Variable Angle Cervical Screw | Rescue Screw For Cervical Plate Design Type-1

Material	Diameter (mm)	Length (mm)	Cat.No.
Titanium	Ø 3.5	12	690.312
		14	690.314
		16	690.316
		18	690.318
		20	690.320
Titanium	Ø 3.8	10	690.331
		12	690.332
		14	690.333
		16	690.334
		18	690.335
		20	690.336





(G2) Cervical Plate

Material	Length (mm)	Cat.No.
Titanium	22.5	690.122
	25.0	690.125
	27.5	690.127
	30.0	690.130
	32.5	690.132
	35.0	690.135
	37.5	690.137
	40.0	690.140
	42.5	690.142
	45.0	690.145
	47.5	690.147
	50.0	690.150
	52.0	690.152
	55.0	690.155
	57.5	690.157
	60.0	690.160
	62.5	690.162
65.0	690.165	
67.5	690.167	
70.0	690.170	





Cervical Screw 3.5/ 3.8 For Cervical Plate Design (G2)

Material	Diameter (mm)	Length (mm)	Cat.No.
Titanium	Ø 3.5	10	692.010
		12	692.012
		14	692.014
		16	692.016
		18	692.018
		20	692.020
Titanium	Ø 3.8	10	692.110
		12	692.112
		14	692.114
		16	692.116
		18	692.118
		20	692.120



Cervical Plate With Inbuilt Cage Single/ Multi Level Cage

Material	Height	Length (mm)	Width (mm)	Height (mm)	Cat.No.
Titanium	Ø 5.0	22.5	15	14	692.605
	Ø 6.0				692.606
	Ø 7.0				692.607
	Ø 8.0				692.608
Titanium	Ø 5.0	25	15	14	692.705
	Ø 6.0				692.706
	Ø 7.0				692.707
	Ø 8.0				692.708





Cervical Plate With Inbuilt Cage Screw | Rescue Locking Screw

For Ø 3.5 mm

Material	Diameter (mm)	Length (mm)	Cat.No.
Titanium	Ø 3.5	10	692.710
		12	692.712
		14	692.714
		16	692.716
		18	692.718
		20	692.720

Cervical Plate With Inbuilt Cage Rescue Locking Screw (TITANIUM)

Material	Diameter (mm)	Length (mm)	Cat.No.
Titanium	Ø 3.8	10	692.810
		12	692.812
		14	692.814
		16	692.816
		18	692.818
		20	692.820







Cervical Cage

Material	Length (mm)	Width (mm)	Hight (mm)	Cat.No.
Titanium	12	14	5.0	692.765
			6.0	692.766
			7.0	692.767
			8.0	692.768

Cervical Single Cavity Cage

Material	Length (mm)	Width (mm)	Hight (mm)	Cat.No.
Peek	12	14	5.0	692.755
			6.0	692.756
			7.0	692.757
			8.0	692.758
			9.0	692.759
			10.0	692.760





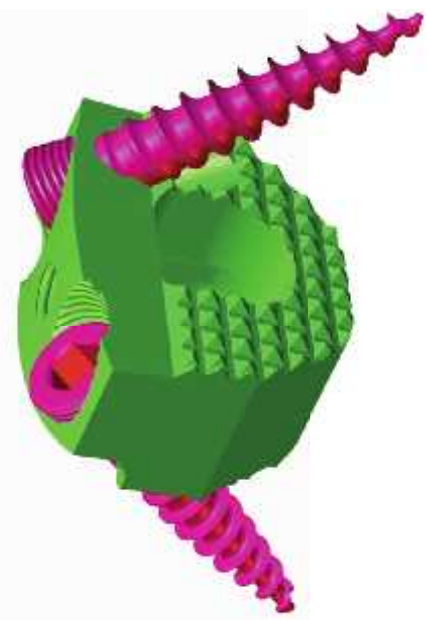
Cervical Double Cavity Cage

Material	Length (mm)	Width (mm)	Hight (mm)	Cat.No.
Peek	12	14	5.0	1056.315
			6.0	1056.316
			7.0	1056.317
			8.0	1056.318
			9.0	1056.319
			10.0	1056.320



Zero Cervical Spacer

Material	Length (mm)	Width (mm)	Hight (mm)	Cat.No.
Titanium	18	14	5.0	692.733
			6.0	692.734
			7.0	692.735
			8.0	692.736
			9.0	692.737
			10.0	692.738
			11.0	692.739
			12.0	692.740



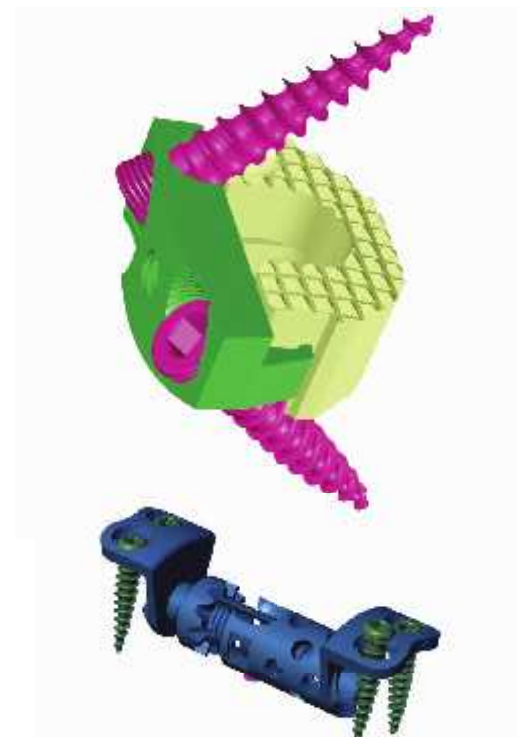


### Zero Cervical Spacer

Material	Length (mm)	Width (mm)	Hight (mm)	Cat.No.
Peek	18	14	5.0	692.725
			6.0	692.726
			7.0	692.727
			8.0	692.728
			9.0	692.729
			10.0	692.730
			11.0	692.731
12.0	692.732			

### Expanadable Cervical Cages (Corpus Cage)

Material	Diameter (mm)	Length (mm)	Cat.No.
Titanium	Ø 12	20-25	681.630
		25-32.5	681.631
		30-42.5	681.632
		40-60	681.633
Titanium	Ø 14	20-25	681.641
		25-32.5	681.642
		30-42.5	681.643
		40-60	681.644





Cervical Corpus Screw | Rescue Screw For Corpus Plate

Material	Diameter (mm)	Length (mm)	Cat.No.
Titanium	Ø 3.5	10	681.690
		12	681.691
		14	681.692
		16	681.693
		18	681.994
Titanium	Ø 3.8	20	681.695
		10	681.690
		12	681.691
		14	681.692
		16	681.693
		18	681.694
		20	681.695





Posterior Cervical (Lateral Mass) Poly Screws

Material	Diameter (mm)	Length (mm)	Cat.No.
Titanium	Ø 3.5	12	692.512
		14	692.514
		16	692.516
		18	692.518
		20	692.520

Posterior Cervical (Lateral Mass) Poly Screws 3.5 mm (P.Th) For C1/C2

Material	Diameter (mm)	Length (mm)	Cat.No.
Titanium	Ø 3.5	20	692.420
		22	692.422
		24	692.424
		26	692.426
		28	692.428
		30	692.430





Lateral Mass / Posterior Cervical Rescue Poly Screws mm

Material	Diameter (mm)	Length (mm)	Cat.No.
Titanium	Ø 3.8	10	695.110
		12	695.112
		14	695.114
		16	695.116
		18	695.118
		20	695.120
		22	695.122
		24	695.124
		26	695.126
		28	695.128
		30	695.130

Spinal Rod-Ø 3.5 mm

Material	Diameter (mm)	Length (mm)	Cat.No.
Titanium	Ø 3.5	40	663.040
		50	663.050
		60	663.060
		70	663.070
		80	663.080
		90	663.090
		100	663.100
		110	663.110
		120	663.120
		130	663.130
		140	693.140
		150	663.150





Cervical Occipital Plate

Material	Size (mm)	Holes	Cat.No.
Titanium	35	7 LCP Holes	693.010
	40		693.011
	45		693.012
	50		693.013



Occipital Plate Screw

Material	Size (mm)	Shaft Diameter (mm)	Head Diameter (mm)	Cat.No.
Titanium	6	3.5	5.1	699.006
	8			699.008
	10			699.010
	12			699.012
	14			699.014





Odontoid Screw (C2 Screw)

Material	Diameter (mm)	Size (mm)	Cat.No.
Titanium	4	25	692.301
		30	692.305
		35	692.310
		40	692.315
		45	692.320



Tapered Spinal Rod Ø 5.5/3.5 mm

Material	Diameter (mm)	Length (mm)	Cat.No.
Titanium	Ø 5.5/3.5	100	665.810
		120	665.812
		140	665.814
		150	665.815
		160	665.816
		180	665.818
		200	665.820
		250	665.825



Tapered Spinal Rod Ø 6.0/3.5 mm

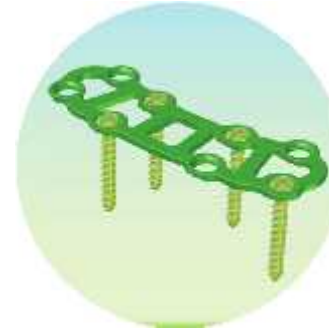
Material	Diameter (mm)	Length (mm)	Cat.No.
Titanium	Ø 6.0/3.5	100	665.810
		120	665.812
		140	665.814
		150	665.815
		160	665.816
		180	665.818
		200	665.820
		250	665.825



Our other Product categories are



Trauma Implants



Cranio Maxillofacial



External Fixators



Hip Joints

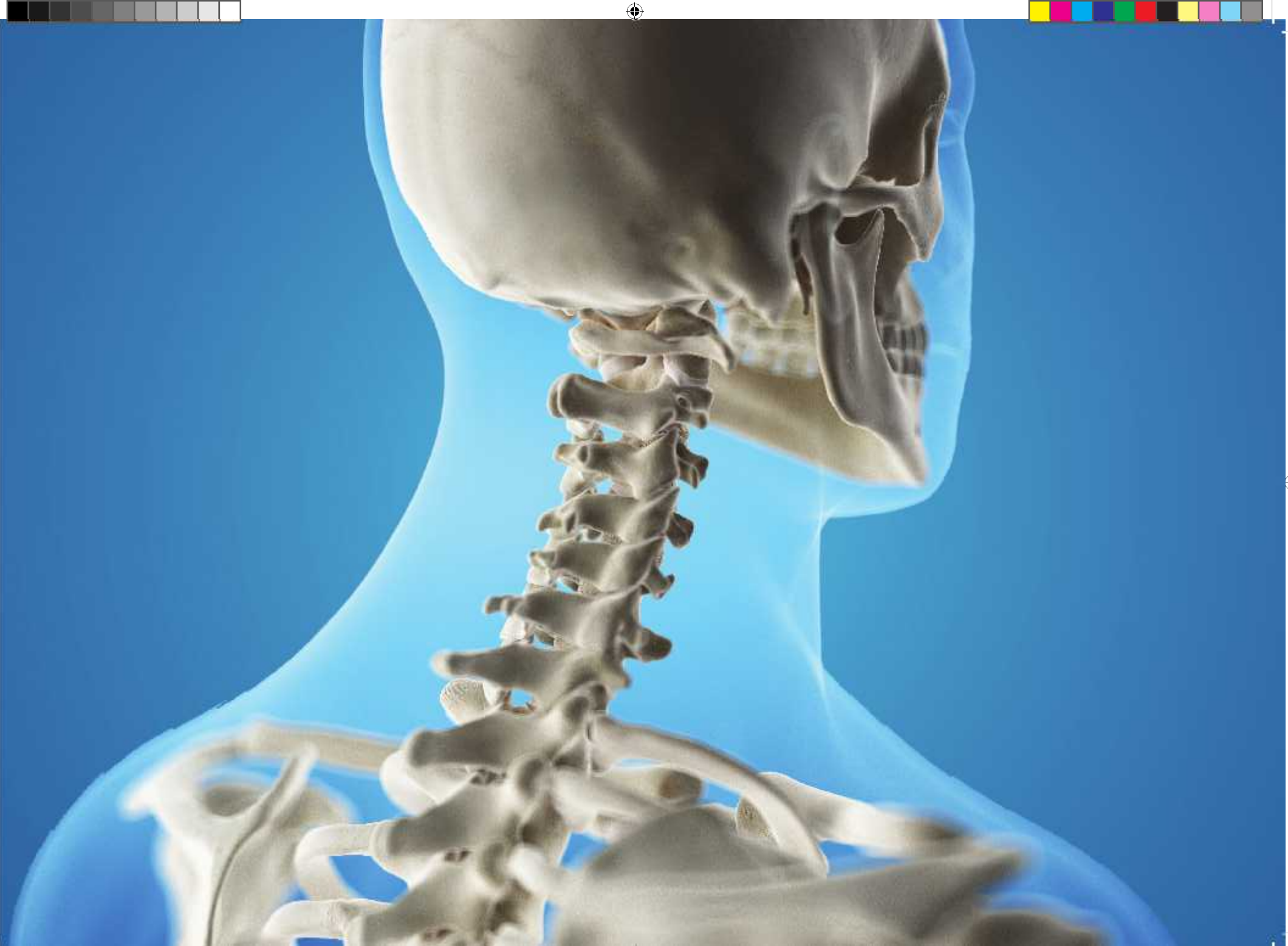


Veterinary



Dental Implants









### **Greens Surgicals Pvt. Ltd.**

#### **Head Office:**

TF-1 E & F, Third Floor, Lotus Aura-I,  
Near IOCL Petrol Pump, Sama Savli Road,  
Vadodara – 390 008  
Gujarat, INDIA  
Phone: +91-265-298-6575

#### **Factory:**

Plot No. 508-512, Savli Industrial Estate,  
GIDC Manjusar, Vadodara - 391 775  
Gujarat, INDIA  
TeleFax: +91-266-726-4890

Email: [info@greensurgicals.com](mailto:info@greensurgicals.com)

[www.greensurgicals.com](http://www.greensurgicals.com)